

FLUID Automation, Inc

• 49175 WEST ROAD • P.O. BOX 930302 • WIXOM, MICHIGAN 48393 • PH. (248) 912-1970 • FAX (248) 912-1971 •
• Website: www.fluidautomation.com • E-mail: sales@fluidautomation.com •

MODEL 201G & 201GH 10:1 RATIO METER-MIX MACHINES

201G FEATURES

- 8" AIR CYLINDER
- LOW LEVEL & LOW PRESSURE INDICATORS
- ADJUSTABLE CATALYST RATIO.
- GRAVITY FED RESIN AND CATALYST TANKS
- 6' OUTLET HOSE.
- 1" O.D. STATIC MIXER
- SOLVENT FLUSH SYSTEM
- 3/4" BALL VALVE OUTLET

201GH FEATURES

- 8" AIR CYLINDER
- LOW LEVEL & LOW PRESSURE INDICATORS
- ADJUSTABLE CATALYST RATIO.
- GRAVITY FED BASE AND CATALYST.
- 8' A & B HOSES WITH PORTABLE GUN
- SG225 DISPENSING GUN
- DISPOSABLE STATIC MIXERS
- NO SOLVENT FLUSHING REQUIRED

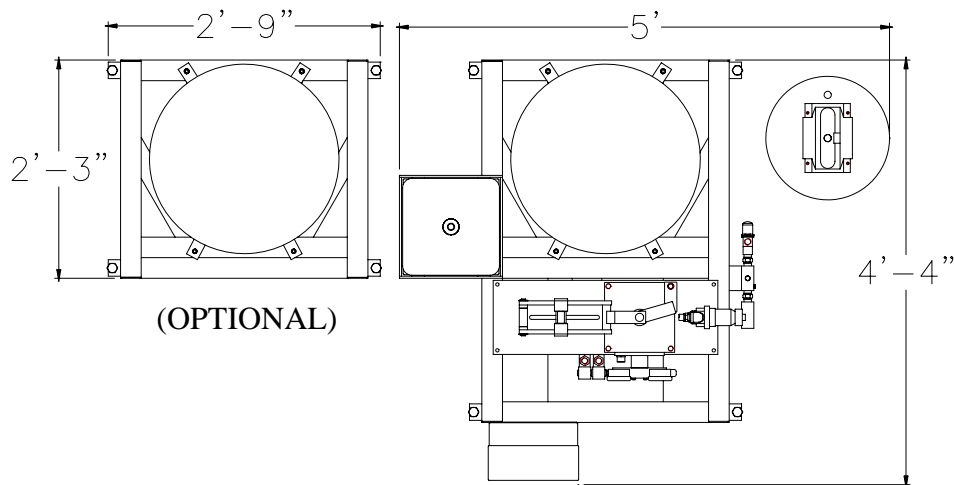
SPECIAL 201G & 201GH OPTIONS

- SECOND RESIN FEED TANK
- COMBINATION 201G & 201GH ACCESSORIES
- ADDITIONAL THIRD STREAM METERING FOR OILS OR PIGMENT
- CATALYST AGITATOR
- PIVOT ARM FOR MIXER ASSEMBLY



MACHINE SPECIFICATIONS

VISCOSITY RANGE: _____	20,000 TO 200,000 CENTIPOISE (CPS)
FLOW RATE: _____	UP TO 8 lb/min OF 100,000 CPS MIX UP TO 15 lb/min OF 20,000 CPS MIX
MAXIMUM OUTPUT PRESSURE: _____	3,500 PSI
RATIO RANGE: _____	7:1 TO 15:1 BY VOLUME
AIR REQUIREMENT: _____	10 CFM @ 100 psi
POWER REQUIREMENT: _____	120 VAC / 50-60 CYCLE / SINGLE PHASE
ELECTRICAL CURRENT REQUIREMENT: _____	3 AMPS.
WEIGHT: _____	1000 POUNDS
HEIGHT REQUIREMENT: _____	75 INCHES (190 CENTIMETERS)



SPACE REQUIRED

OPTIONAL ACCESSORIES

- 3P THIRD STREAM METERING OPTION FOR SILICONE OIL OR PIGMENT
- AG CATALYST FEED TANK AGITATOR
- CT CYCLE COUNTER ASSEMBLY FOR MATERIAL CONSUMPTION RECORDS
- DB SECOND RESIN FEED TANK (MOUNTED ON A SEPARATE FRAME)
- SA940 PIVOTING SWING ARM FOR MOUNTED STATIC MIXER
- SG225 HAND GUN ASSEMBLY WITH DISPOSABLE STATIC MIXERS
- B240 INDUSTRIAL METERING PUMP (USED WITH HAND GUN ASSEMBLY ONLY)